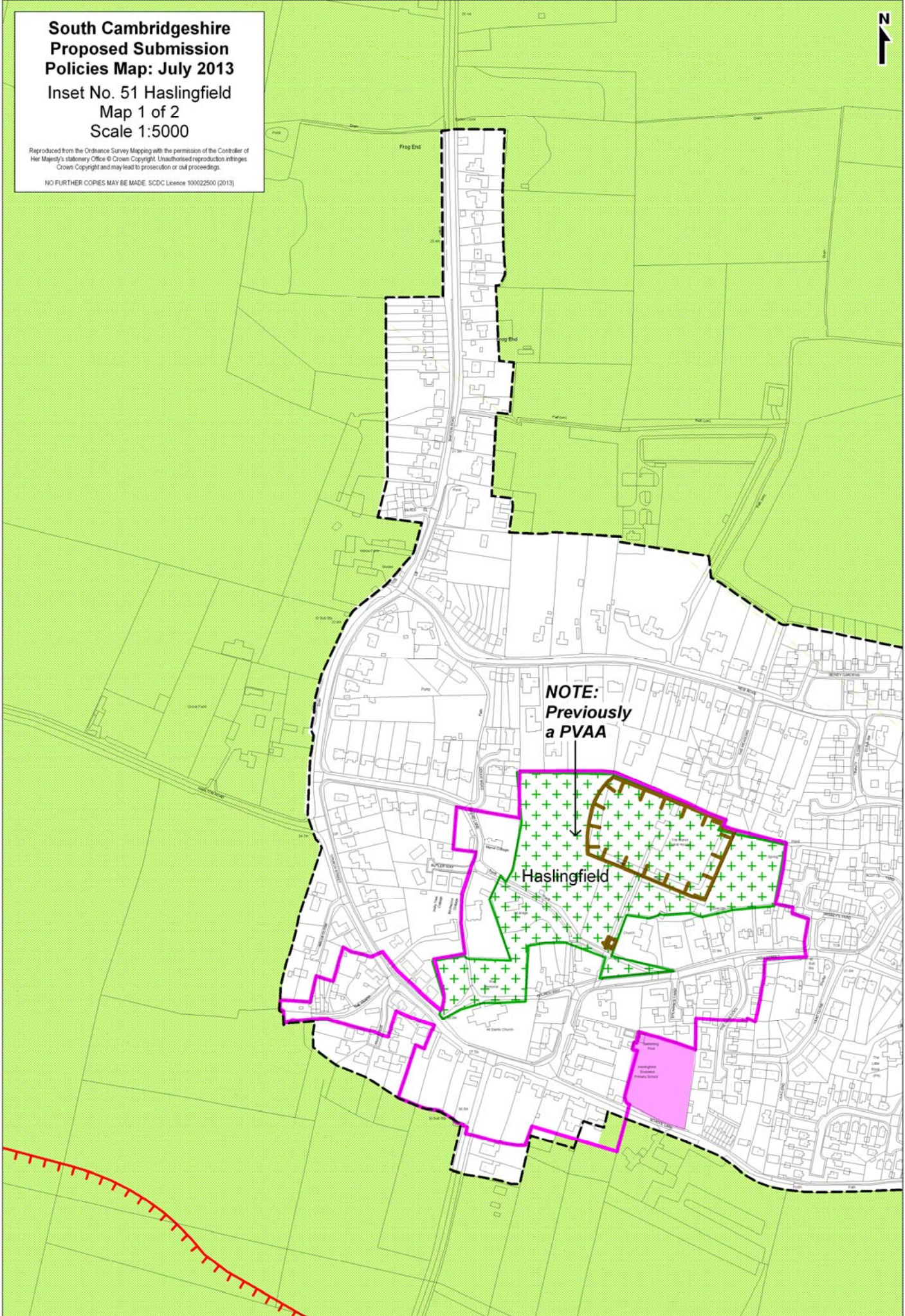




**South Cambridgeshire
Proposed Submission
Policies Map: July 2013**
Inset No. 51 Haslingfield
Map 1 of 2
Scale 1:5000

Reproduced from the Ordnance Survey Mapping with the permission of the Controller of Her Majesty's Stationery Office © Crown Copyright. Unauthorised reproduction infringes Crown Copyright and may lead to prosecution or civil proceedings.

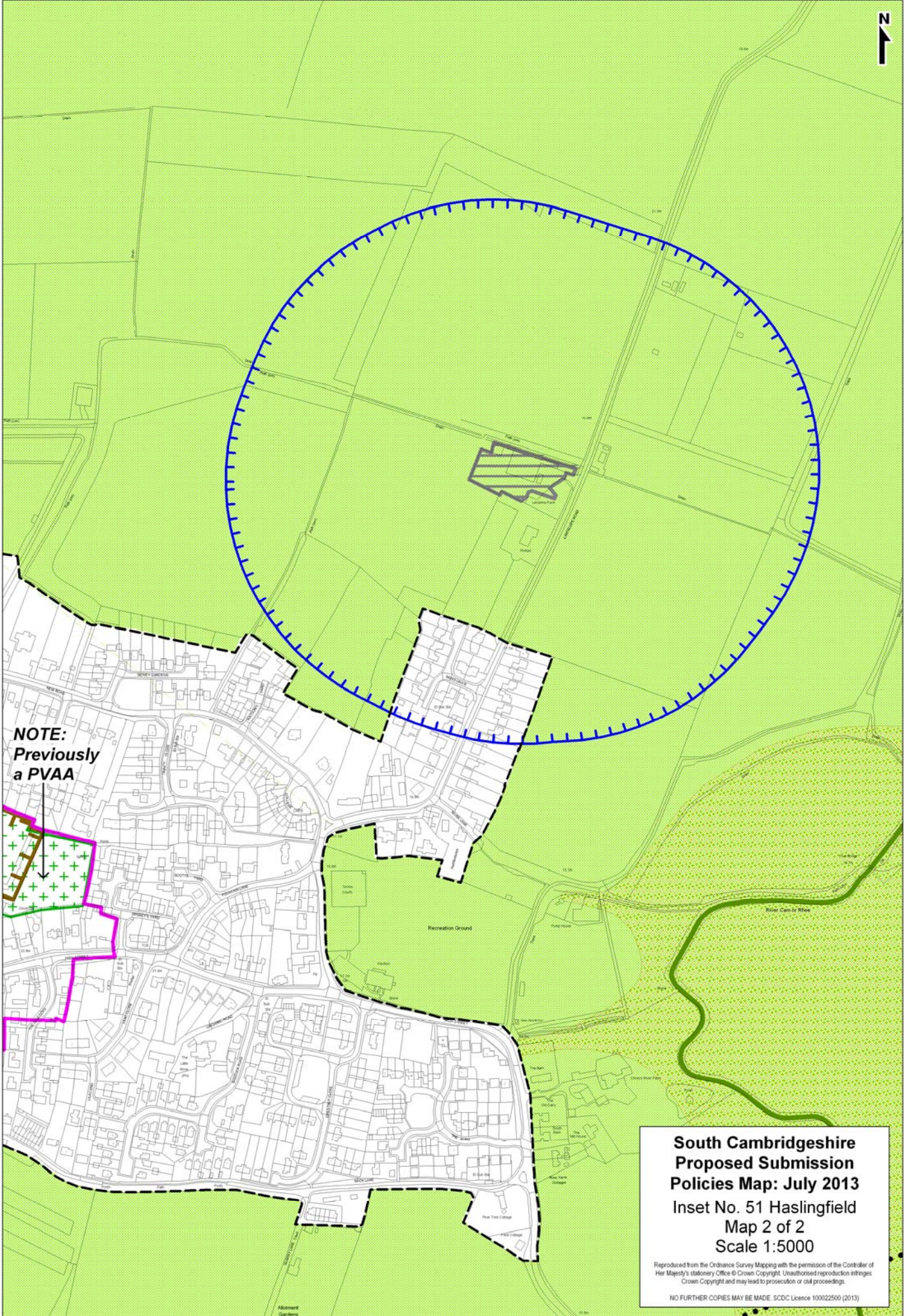
NO FURTHER COPIES MAY BE MADE. SCDL Licence 100022500 (2013)



NOTE:
Previously
a PVAA

Haslingfield

Haslingfield Primary School

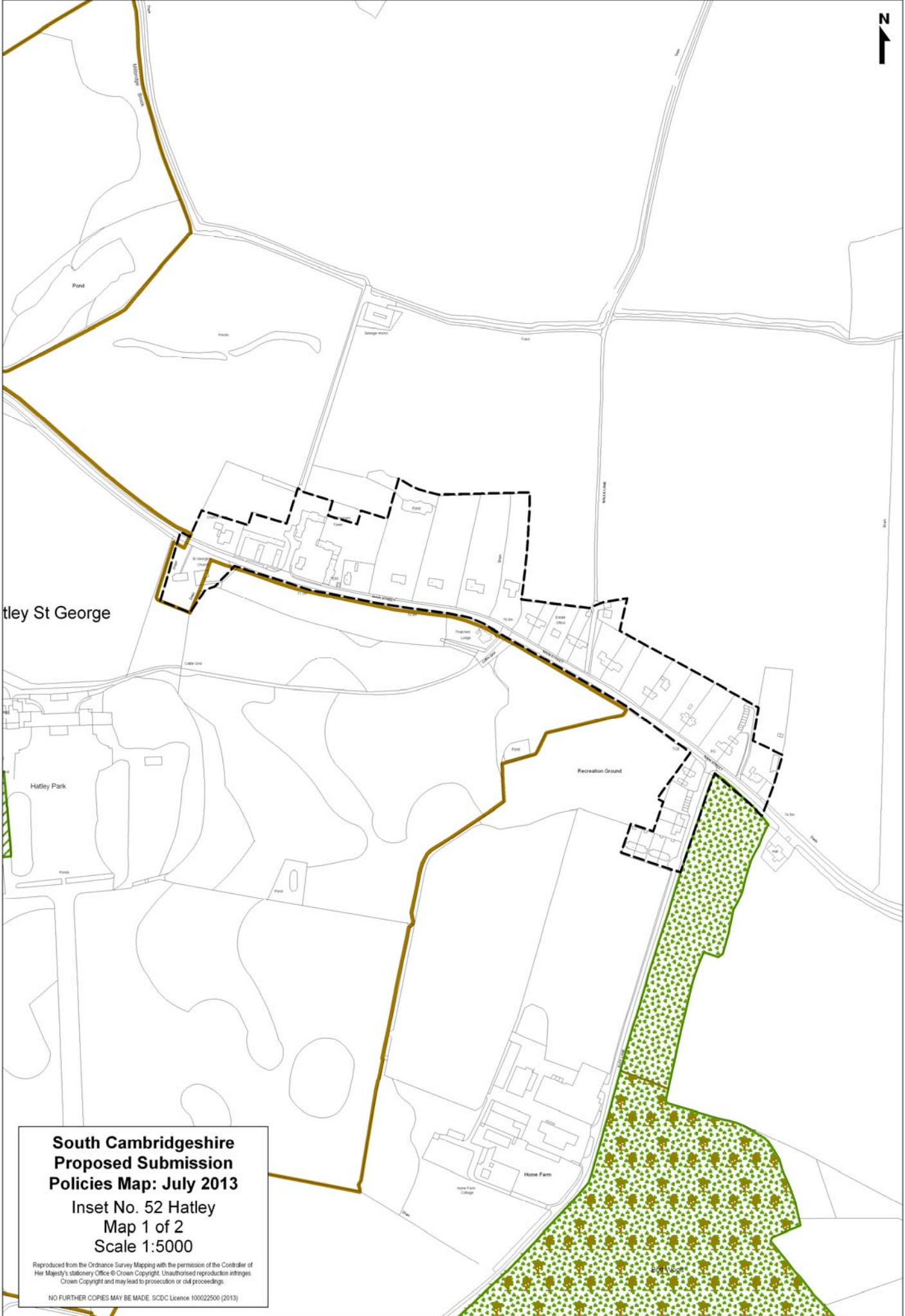


NOTE:
Previously
a PVAA

**South Cambridgeshire
Proposed Submission
Policies Map: July 2013**
Inset No. 51 Haslingfield
Map 2 of 2
Scale 1:5000

Reproduced from the Ordnance Survey Mapping with the permission of the Controller of Her Majesty's Stationery Office © Crown Copyright. Unauthorised reproduction infringes Crown Copyright and may lead to prosecution or civil proceedings.

NO FURTHER COPIES MAY BE MADE. SCDC Licence 100022500 (2013)



**South Cambridgeshire
Proposed Submission
Policies Map: July 2013**
Inset No. 52 Hatley
Map 1 of 2
Scale 1:5000

Reproduced from the Ordnance Survey Mapping with the permission of the Controller of Her Majesty's Stationery Office © Crown Copyright. Unauthorised reproduction infringes Crown Copyright and may lead to prosecution or civil proceedings.

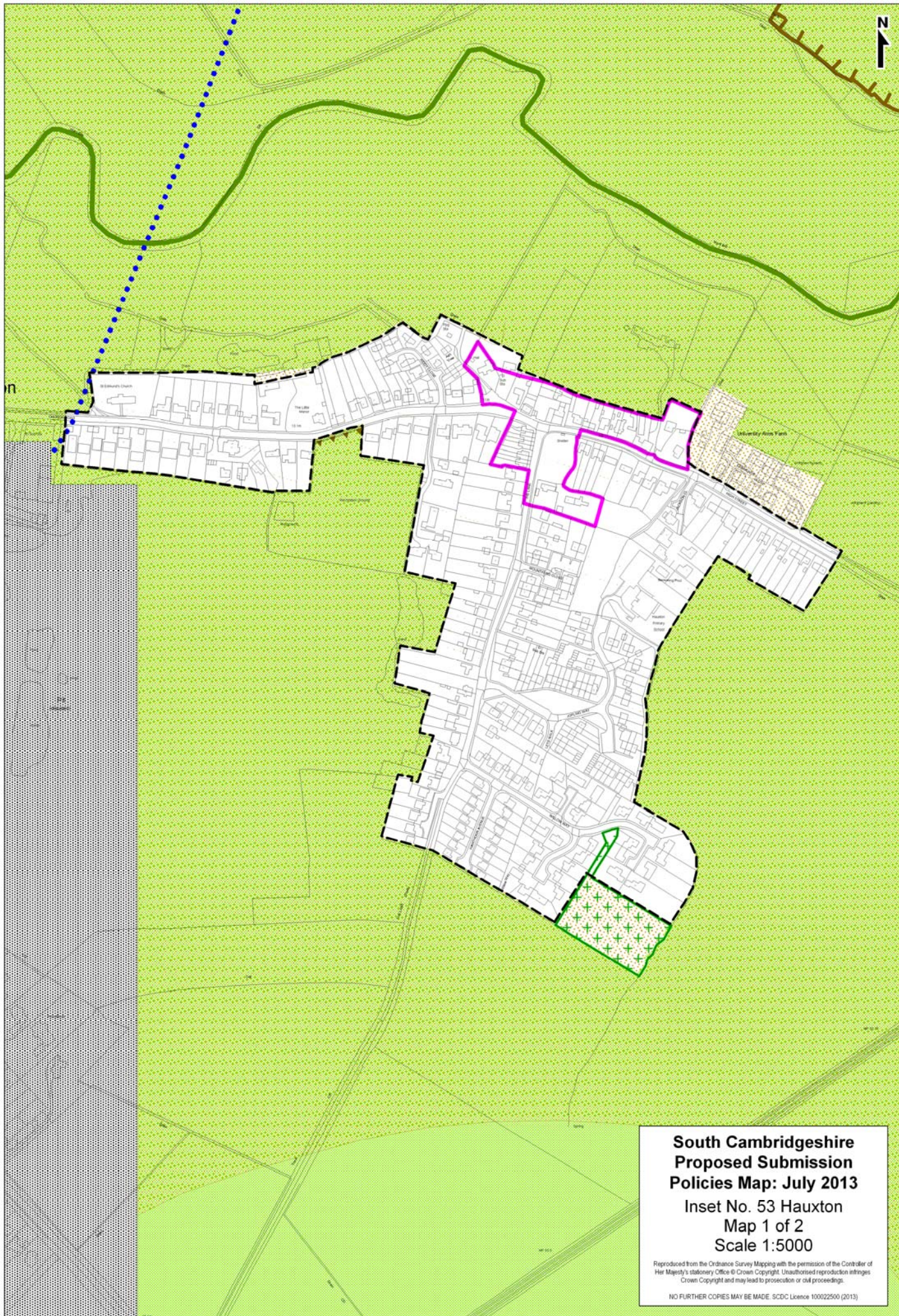


**South Cambridgeshire
Proposed Submission
Policies Map: July 2013**

**Inset No. 52 Hatley
Map 2 of 2
Scale 1:5000**

Reproduced from the Ordnance Survey Mapping with the permission of the Controller of Her Majesty's Stationery Office © Crown Copyright. Unauthorised reproduction infringes Crown Copyright and may lead to prosecution or civil proceedings.

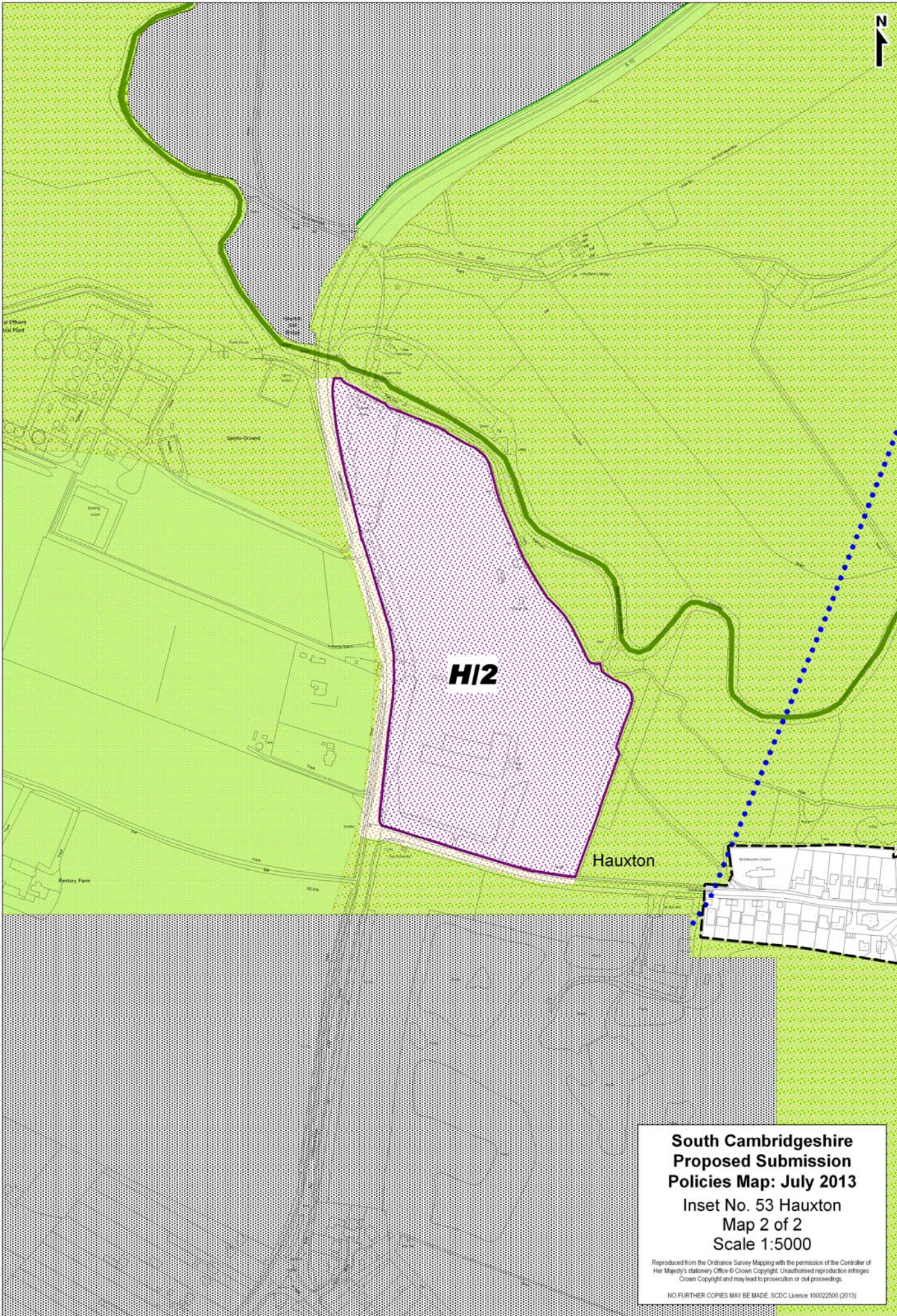
NO FURTHER COPIES MAY BE MADE. SCDC Licence 100022500 (2013)



**South Cambridgeshire
Proposed Submission
Policies Map: July 2013**
Inset No. 53 Hauxton
Map 1 of 2
Scale 1:5000

Reproduced from the Ordnance Survey Mapping with the permission of the Controller of Her Majesty's Stationery Office © Crown Copyright. Unauthorised reproduction infringes Crown Copyright and may lead to prosecution or civil proceedings.

NO FURTHER COPIES MAY BE MADE. SCDC Licence 100022500 (2013)



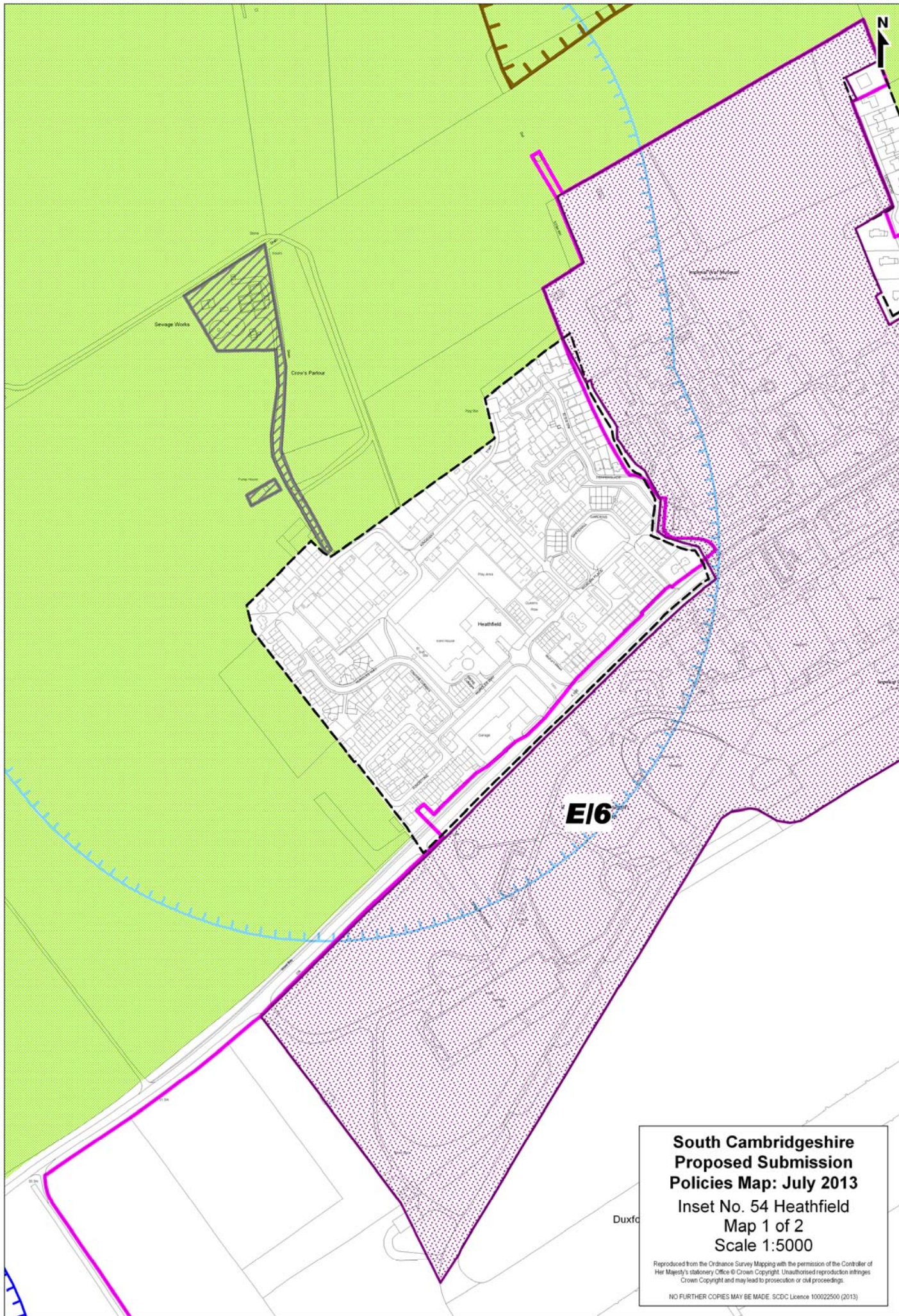
H/2

Hauxton

**South Cambridgeshire
Proposed Submission
Policies Map: July 2013**
Inset No. 53 Hauxton
Map 2 of 2
Scale 1:5000

Reproduced from the Ordnance Survey Mapping with the permission of the Controller of Her Majesty's Stationery Office © Crown Copyright. Unauthorised reproduction infringes Crown Copyright and may lead to prosecution or civil proceedings.

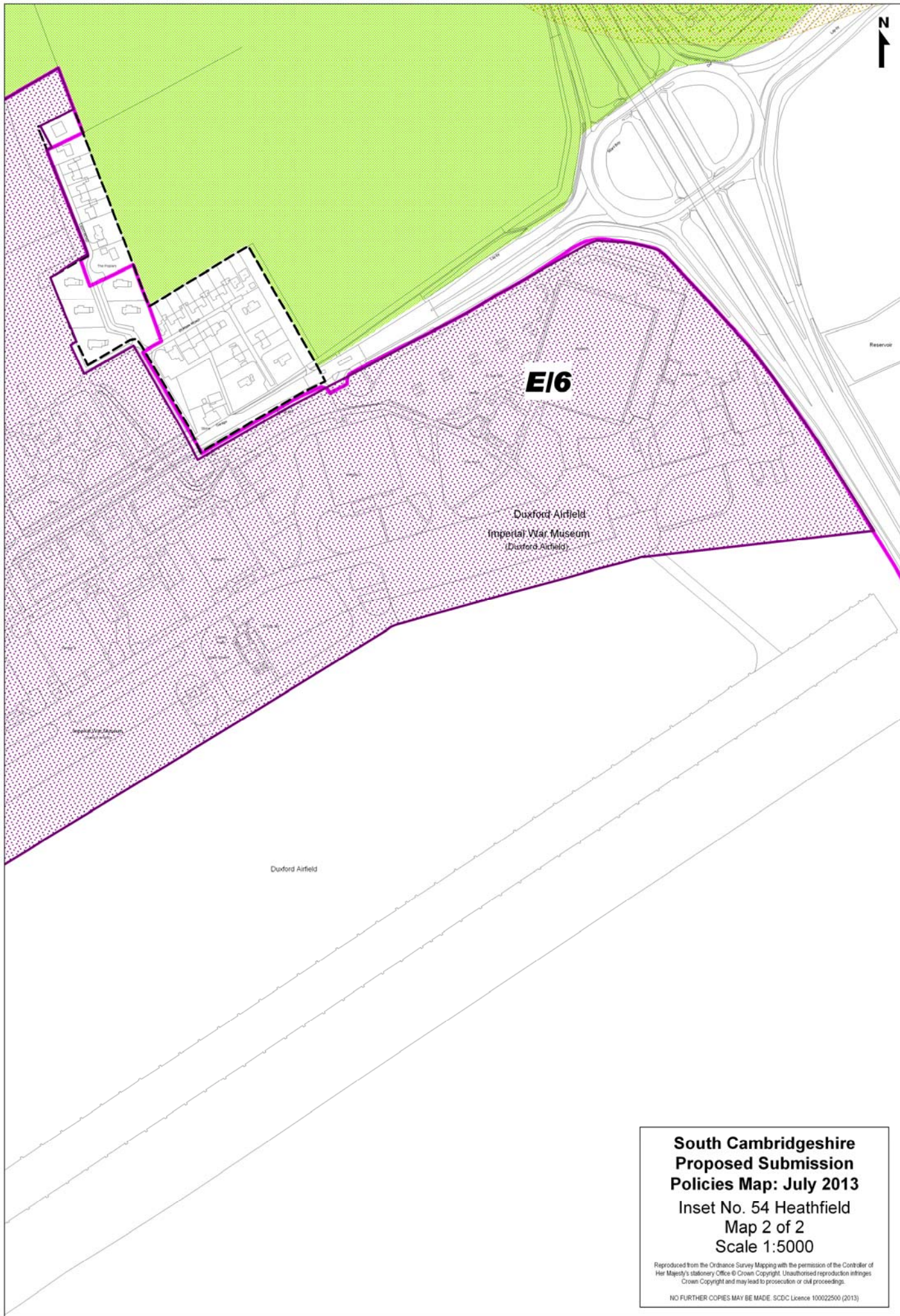
NO FURTHER COPIES MAY BE MADE. SCDC Licence 100022500 (2013)



**South Cambridgeshire
Proposed Submission
Policies Map: July 2013**
Inset No. 54 Heathfield
Map 1 of 2
Scale 1:5000

Reproduced from the Ordnance Survey Mapping with the permission of the Controller of Her Majesty's Stationery Office © Crown Copyright. Unauthorised reproduction infringes Crown Copyright and may lead to prosecution or civil proceedings.

NO FURTHER COPIES MAY BE MADE. SCDC Licence 100022500 (2013)



**South Cambridgeshire
Proposed Submission
Policies Map: July 2013**
Inset No. 54 Heathfield
Map 2 of 2
Scale 1:5000

Reproduced from the Ordnance Survey Mapping with the permission of the Controller of Her Majesty's Stationery Office © Crown Copyright. Unauthorised reproduction infringes Crown Copyright and may lead to prosecution or civil proceedings.

NO FURTHER COPIES MAY BE MADE. SCDC Licence 100022500 (2013)